

State of California
 County of Tuolumne
 I hereby certify that the above is a true and correct map of Sheep Ranch Townsite situated in Calaveras County, California, drawn upon a scale of 80 feet to an inch from the original Field Notes of the survey made by me during the months of Oct. and Nov. 1878, under direction of I. H. Reed, County Judge of Calaveras County.

A. B. Beauvais (signed)
 U.S. Dept. Mineral Surv.

Sworn & Subscribed to before me this 19th. day of Feb. A.D. 1879.

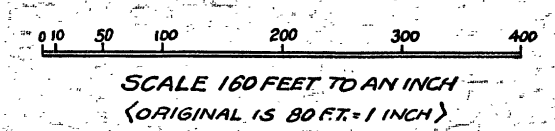
C. E. White (signed)
 Notary Public

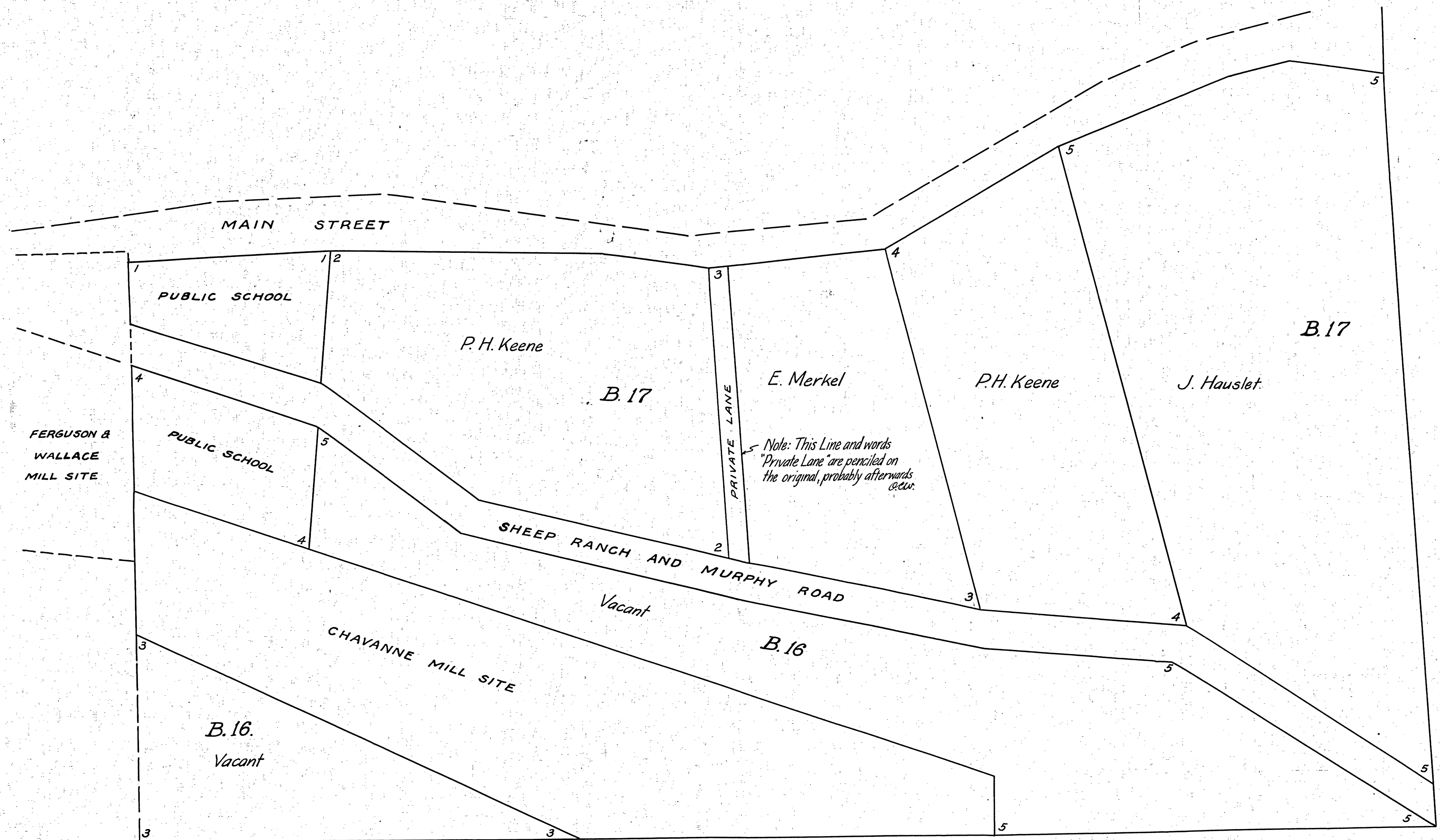


MAP OF SHEEP RANCH CALAVERAS COUNTY CAL.

COMPRISING THE SE 1/4 OF SE 1/4 OF SEC. 7, S 1/2 OF SW 1/4 OF SEC. 8, AND NE 1/4 OF NE 1/4 OF SEC. 18 IN TOWNSHIP No. 4 NORTH RANGE 14 EAST OF MOUNT DIABLO BASE AND MERIDIAN. SURVEYED BY A. B. BEAUVAIS, U.S. DEPUTY MINERAL SURVEYOR, UNDER INSTRUCTIONS FROM I. H. REED, COUNTY JUDGE OF CALAVERAS COUNTY. AREA 160 ACRES

SURVEY COMMENCED OCT. 25TH. 1878.
 SURVEY COMPLETED NOV. 6TH. 1878.





Map showing the subdivision of original Lot 4, Block 16 in Sheep Ranch Townsite now comprising Lots 4 and 5 in Block 16, and Lots 1, 2, 3, 4, and 5 in Block 17 as described in the Field Notes accompanying this Plat.

Filed Nov. 8th, 1879.
 R. M. Redmond (signed)
 Recorder

I hereby certify the above Plat correct surveyed by me under instructions from I. H. Reed, County Judge of Calaveras County, Cal., on the 24th day of Oct. 1870. A. B. Beauvais, (signed)
 U. S. Dept. Surv.

Sworn and subscribed to before me this 31 day of October, 1879
 E. E. White (signed)
 Justice of the Peace

ADDITIONAL SURVEY
 OF THE
 TOWNSITE
 OF
 SHEEP RANCH