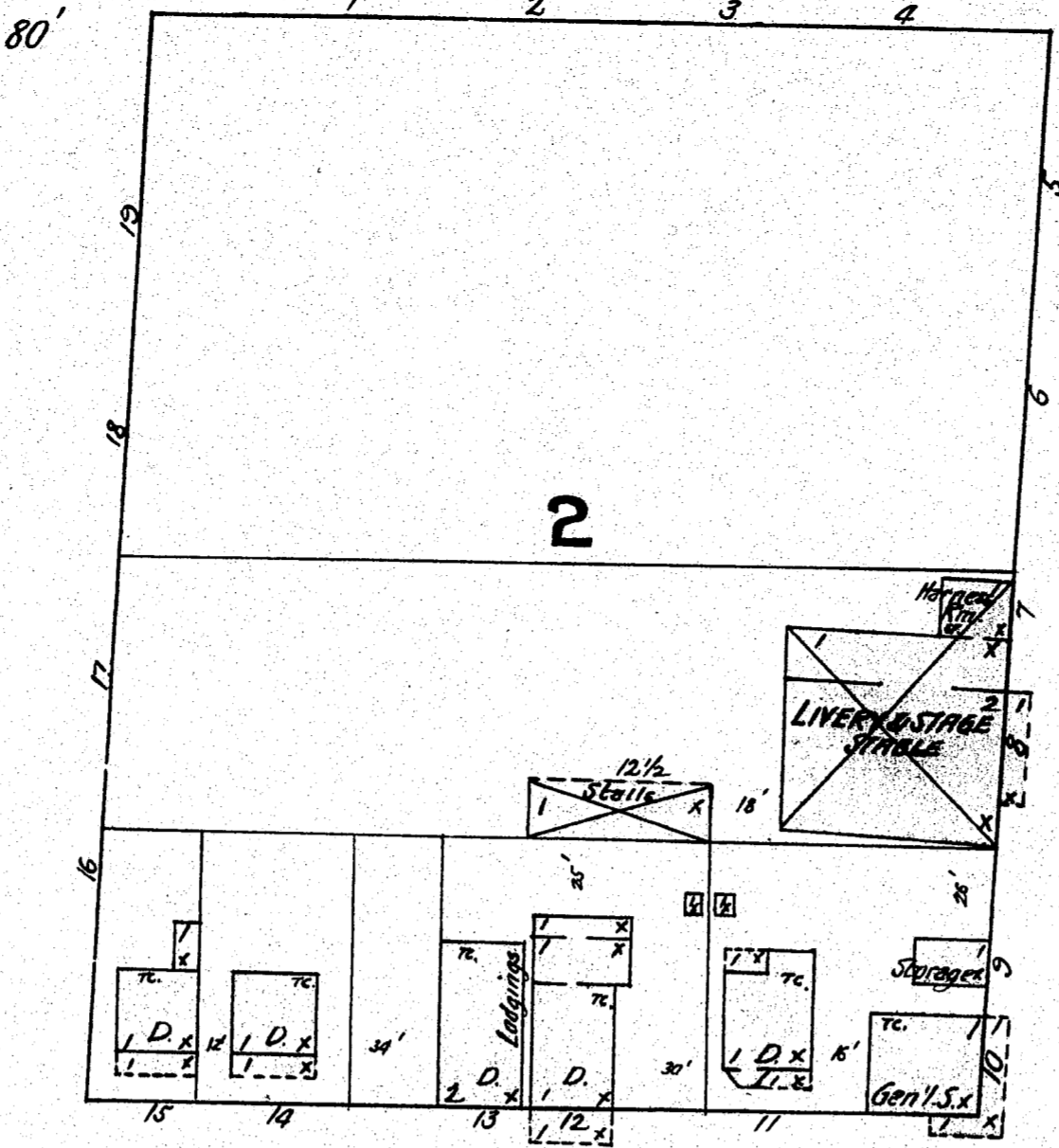
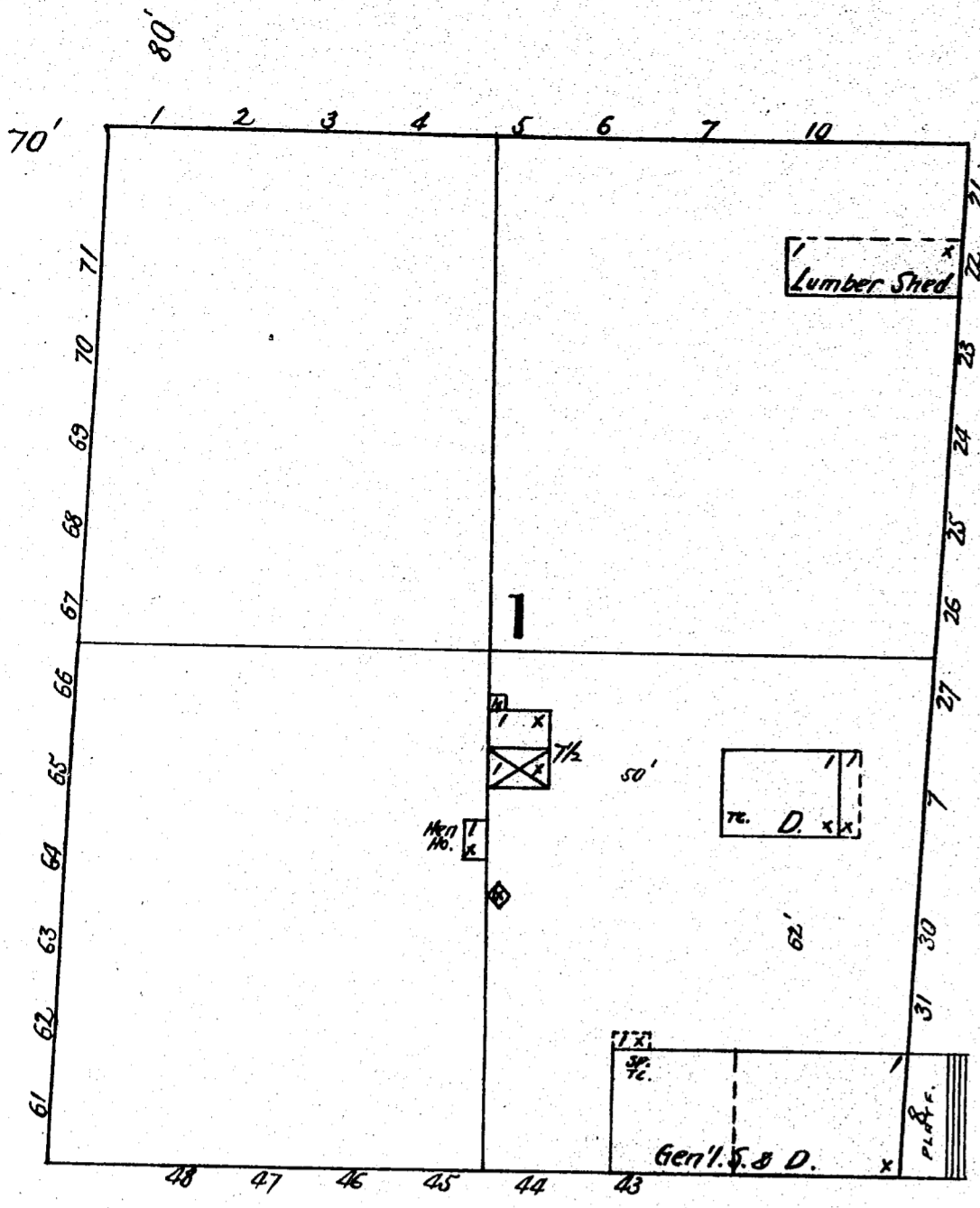
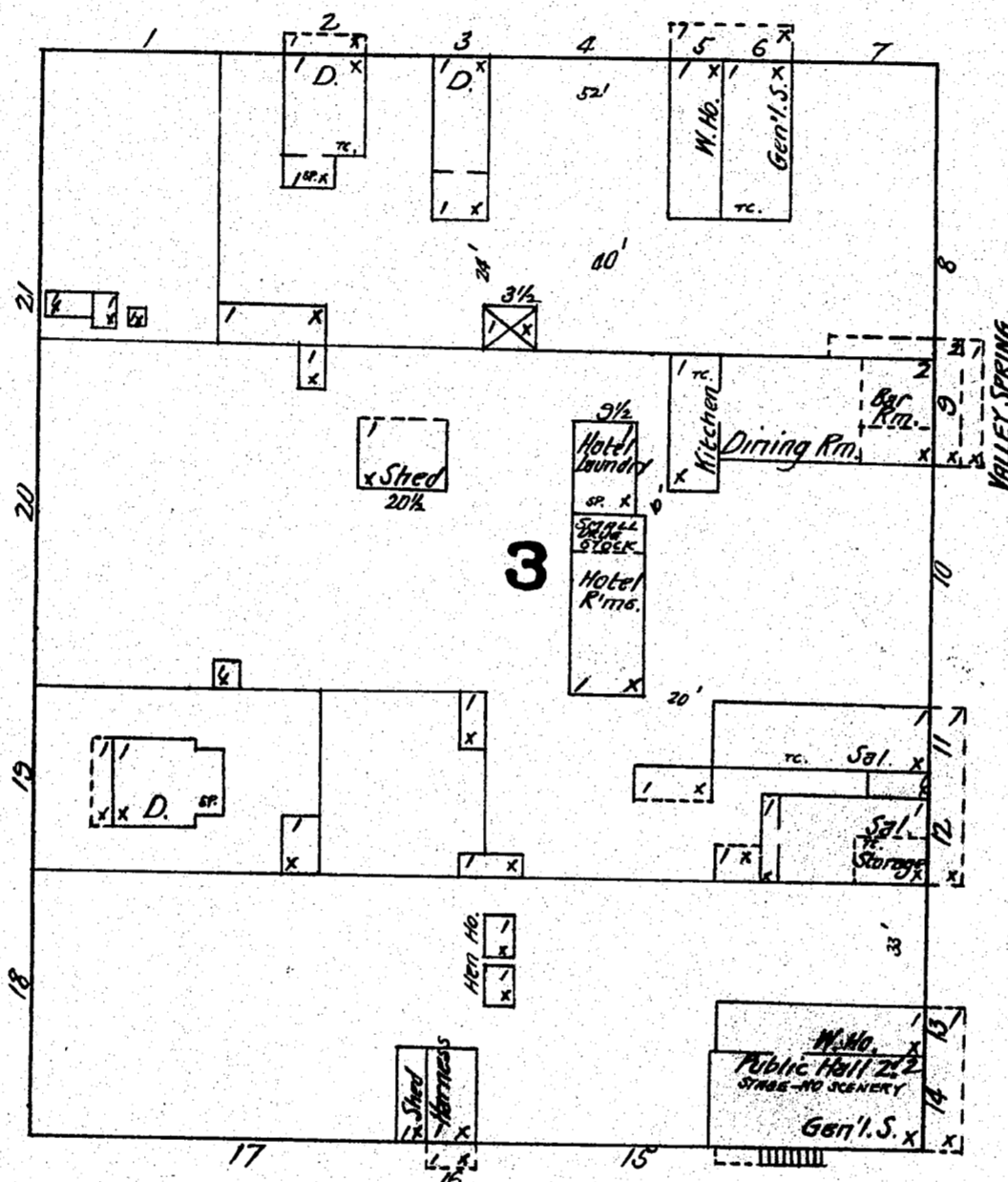
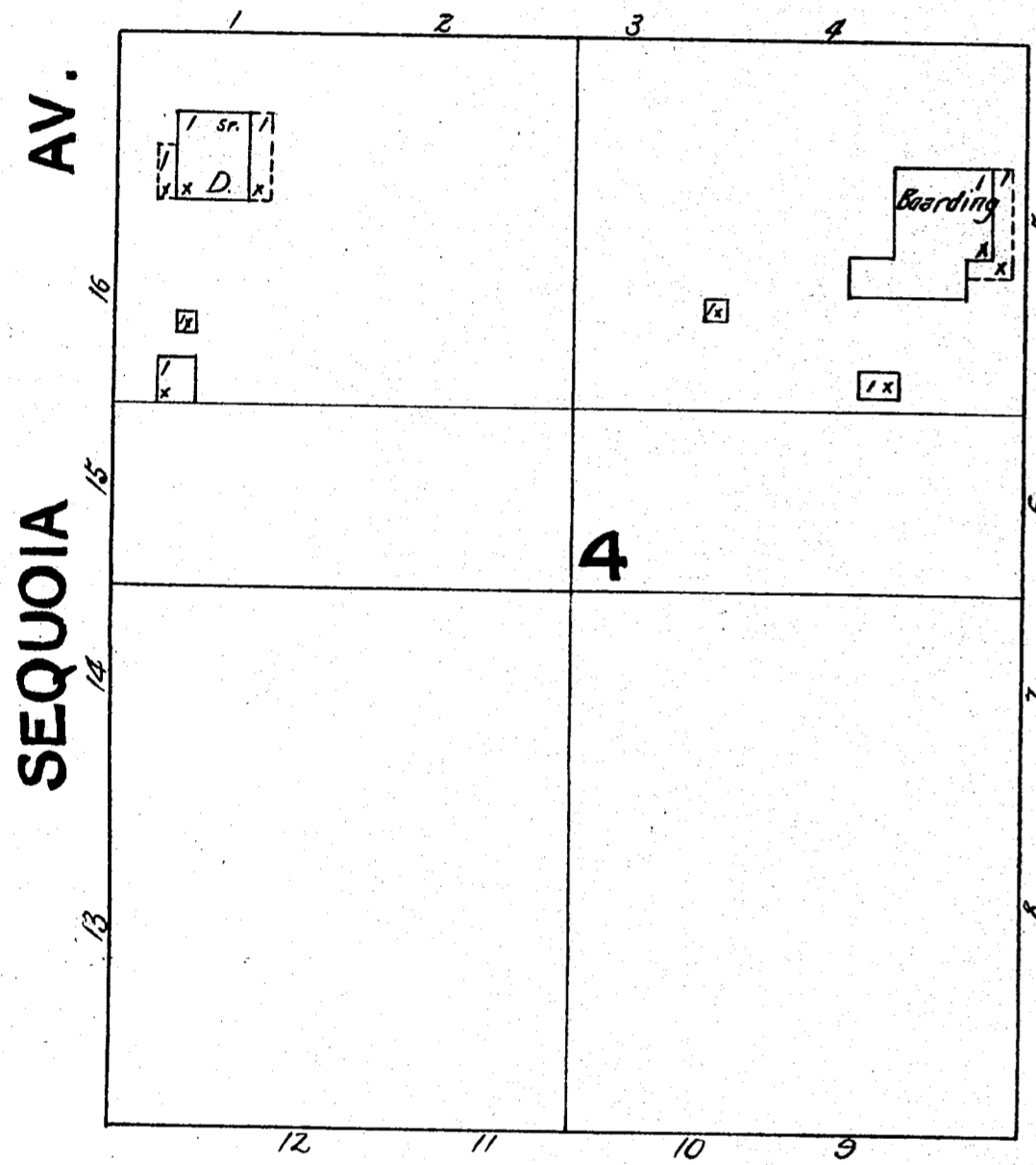


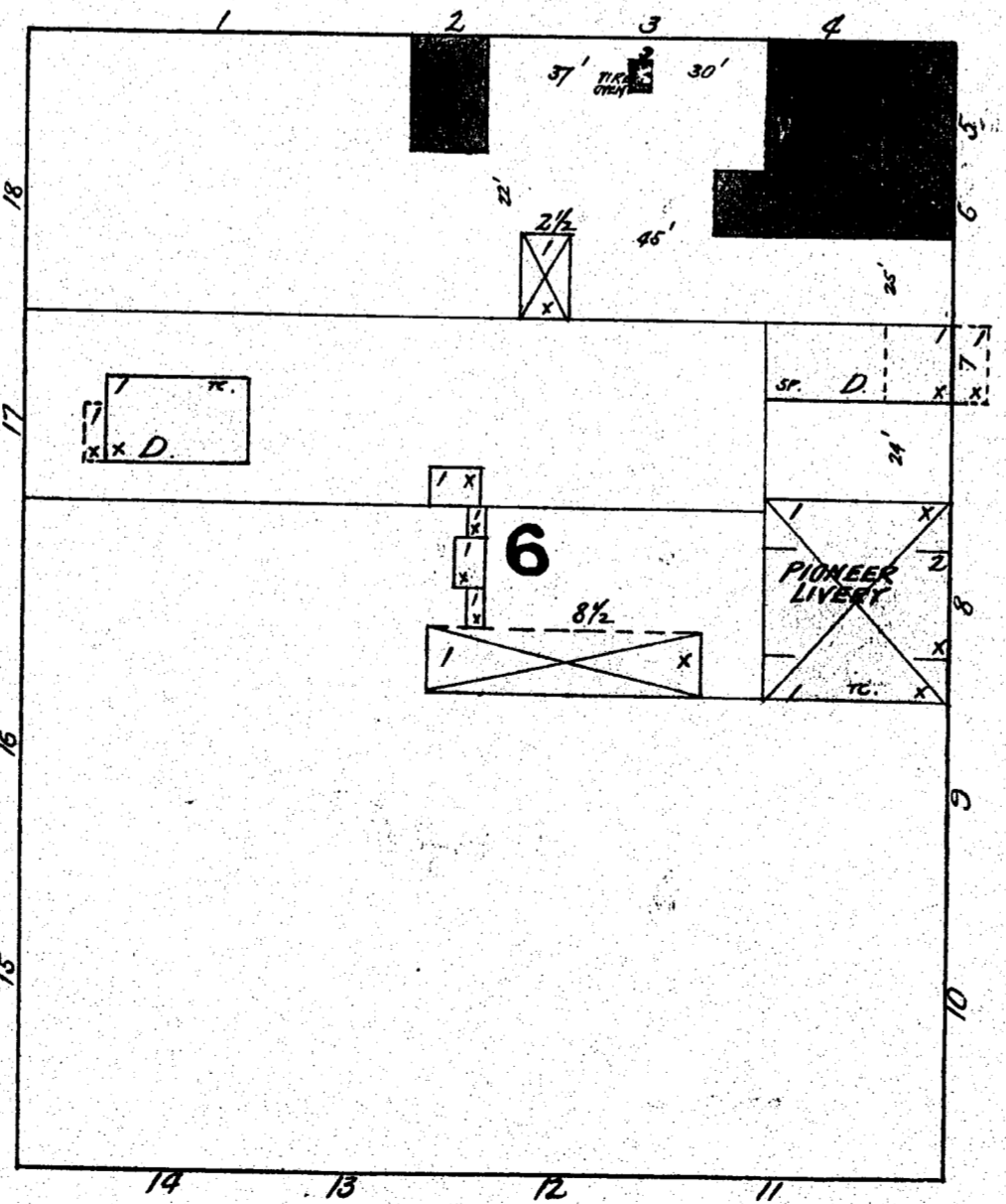
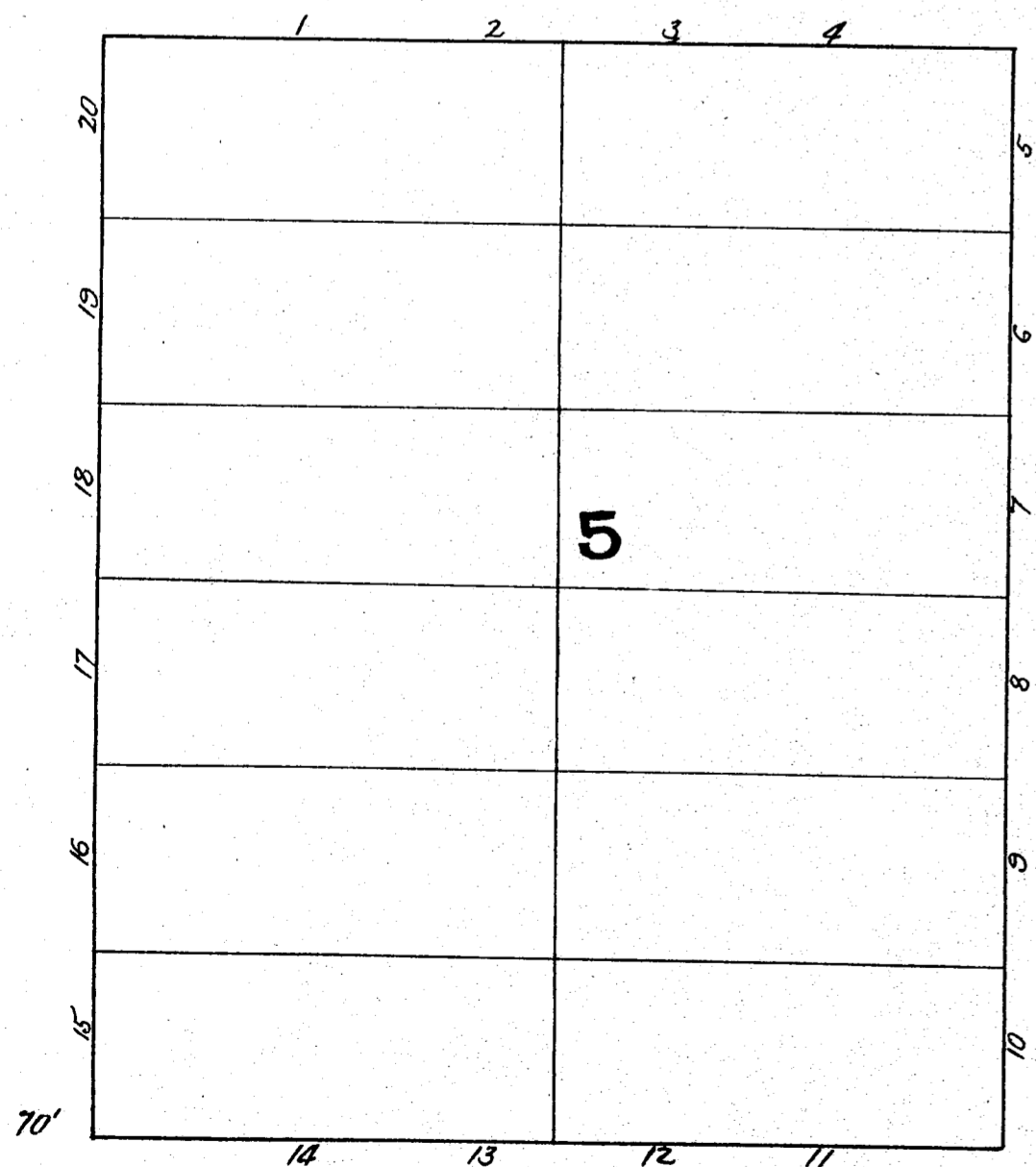
CHESTNUT



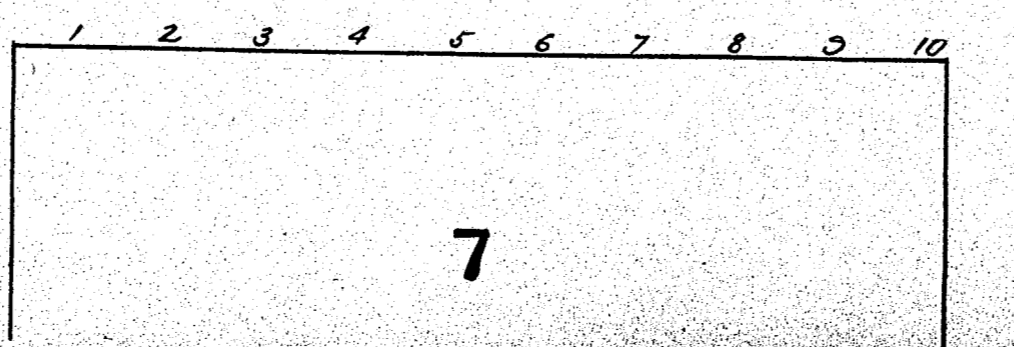
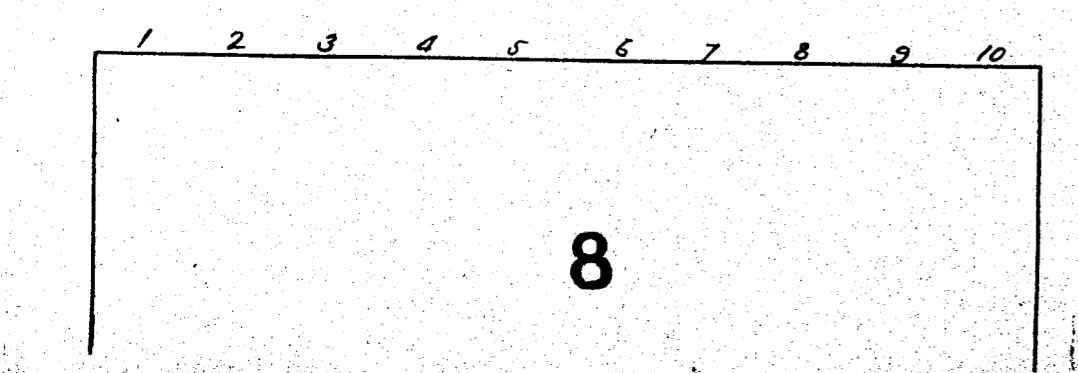
LAUREL



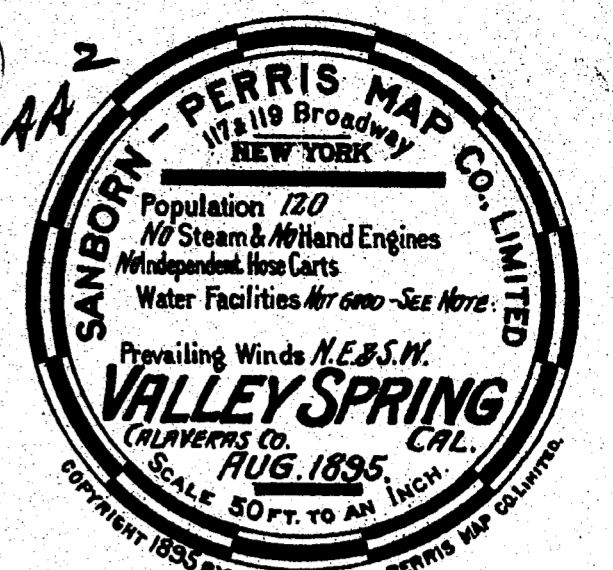
GEDAR



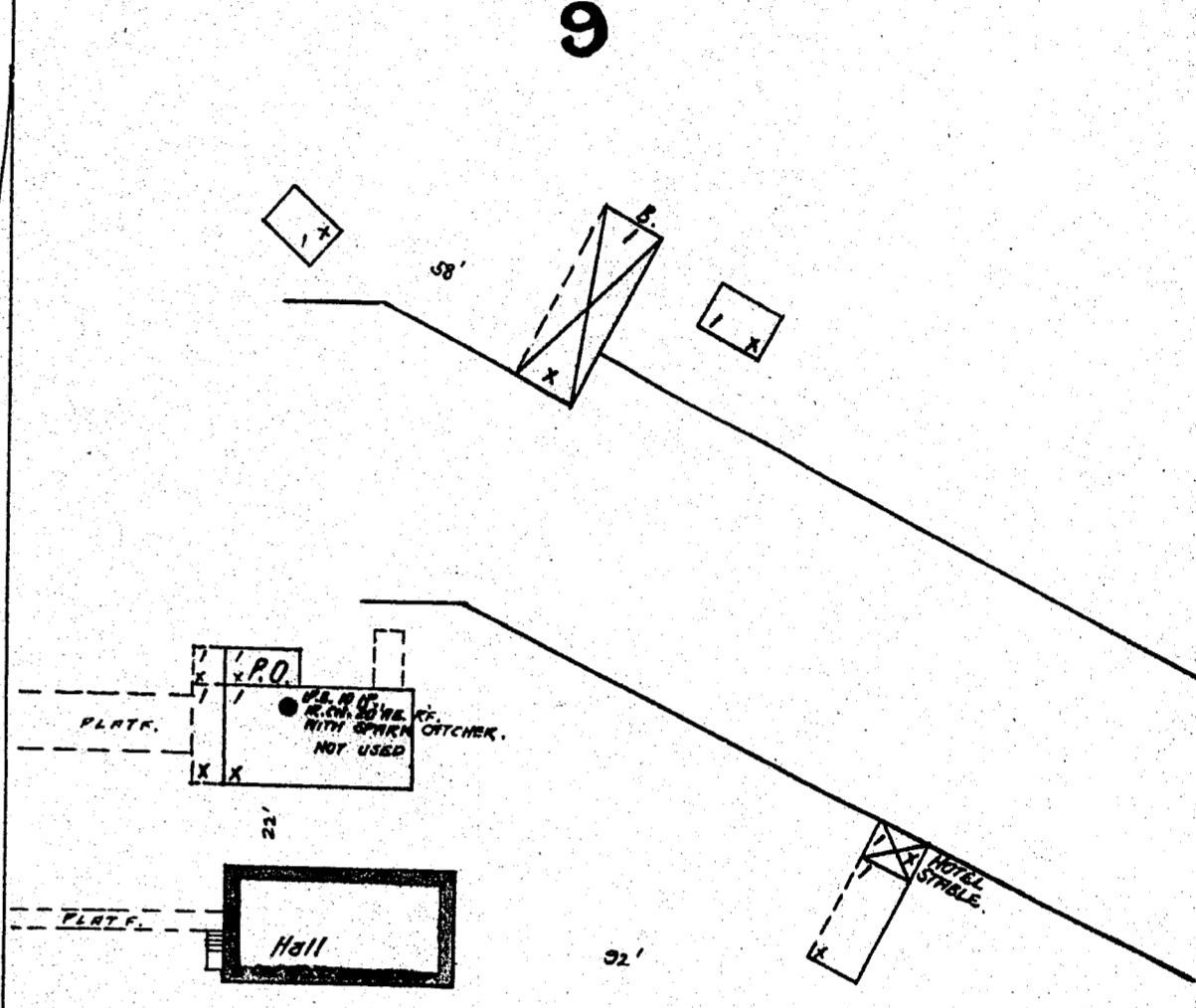
PINE



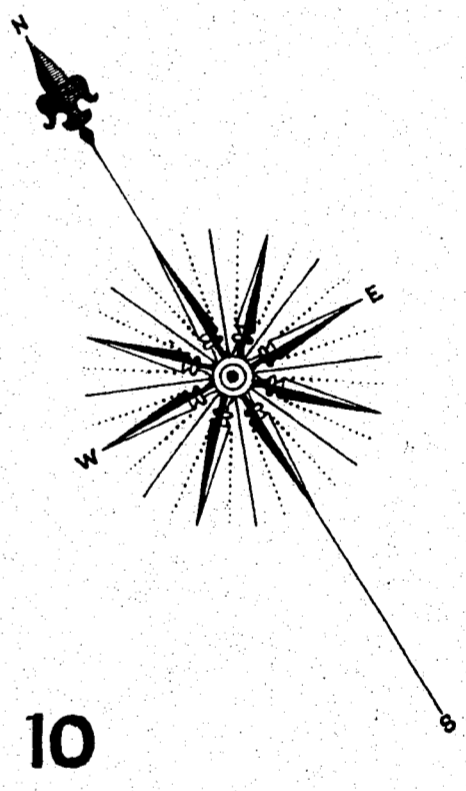
LIBRARY OF CONGRESS
COPYRIGHT
OCT 10 1895
CITY OF WASHINGTON
51327 PR 2



NOTE.
REAL WOOD.
LIGHTS 5' H.
GRADE LEVEL.
WATER SUPPLIED FOR
DOMESTIC PURPOSES FROM
MOUNTAIN HILLS CANYON DITCH
NO FIRE APPS.
BUILDINGS NEW & IN GOOD REPAIR.



PLATF.
S. V. B. N. R. R.
WAGON GARAGE TO LODG.



10

PLATF.

CUKE HEAP 8'

TURN TABLE

SWITCH

KEY

---	FIRE WALL 6 IN. AB. ROOF
---	CONCRETE WALL
---	FRAME PARTITION
---	OPENING & IRON DOOR
---	WINDOWS - SHUTTERS
---	STABLE
---	WINDOW IN 1ST STORY
---	2ND & 4TH
---	2ND & 4TH
---	BLDG'S COLORED YELLOW ARE FRAME
---	RED - BRICK
---	BLUE - STORE
---	GREY - IRON
---	BROWN - ADOBE
---	GREEN - SPECIALS
---	MARKED (S) ARE CLOTH LINED
---	(S) INDICATE RELATIVE HEIGHTS
---	ALTERNATE STREET NOS ARE ACTUAL
---	CONSECUTIVE " " ARBITRARY
---	BROKEN LINE NEAR BLDG WOOD CORNICE
---	SOLID " " METAL

ISBN 0-932732-03-8

Map Div. 3
Library of Congress

