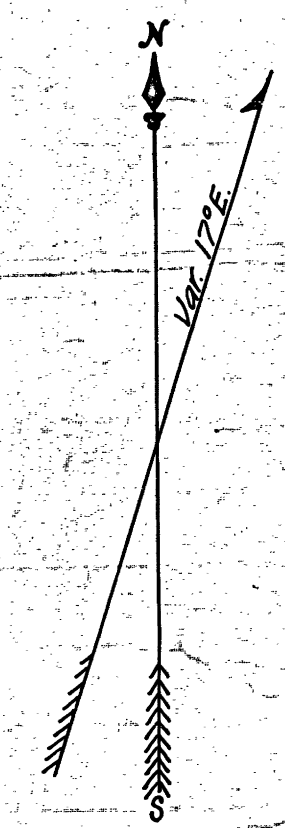
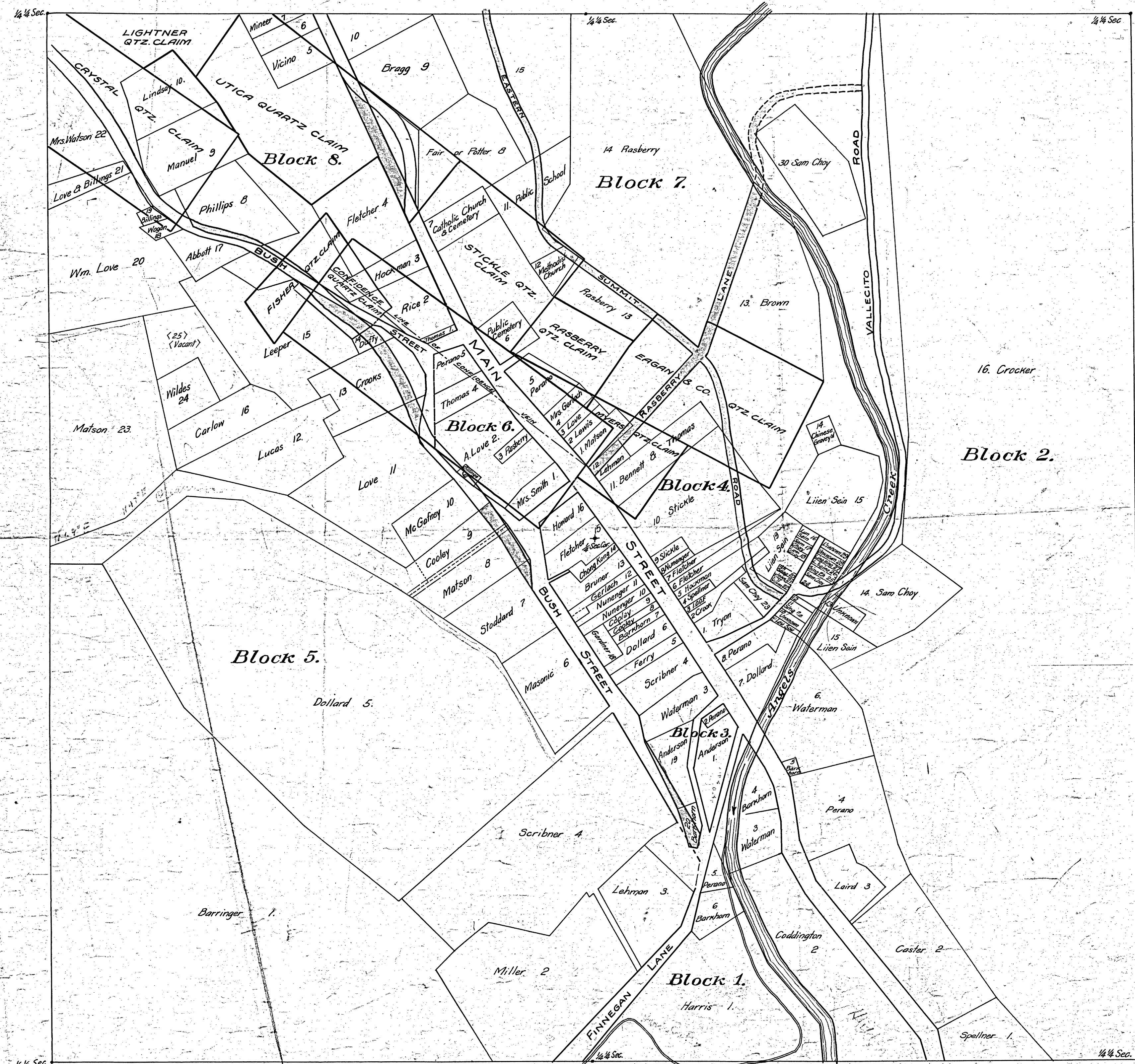


Surveyor's Map of Angels Twp. Filed July 18th. 1873.
 J.A. Foster, Recorder
 by W.F. Colton, Deputy

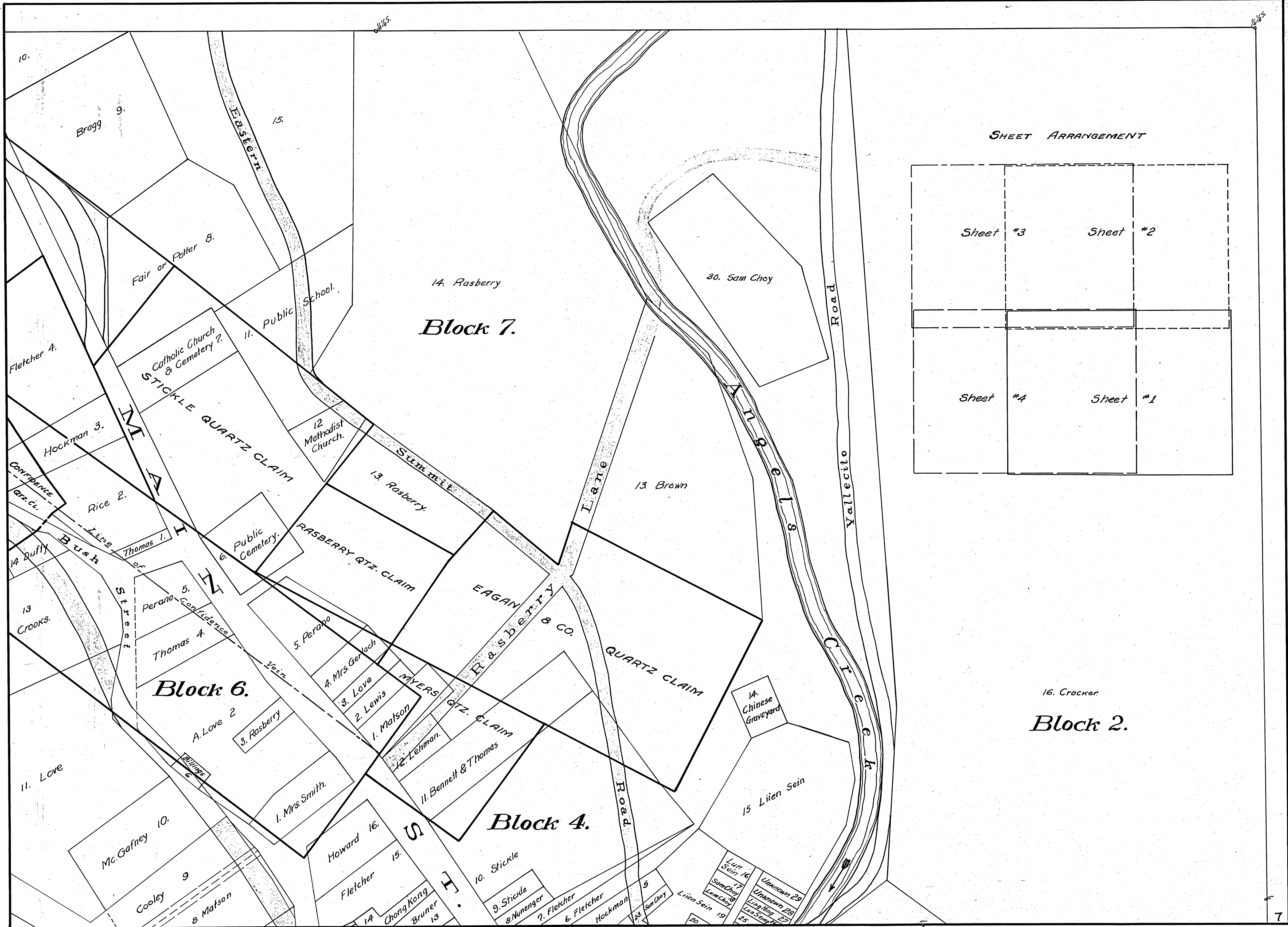


Scale 80 feet to 1 inch (original)
 Scale 160 feet to 1 inch (this copy)

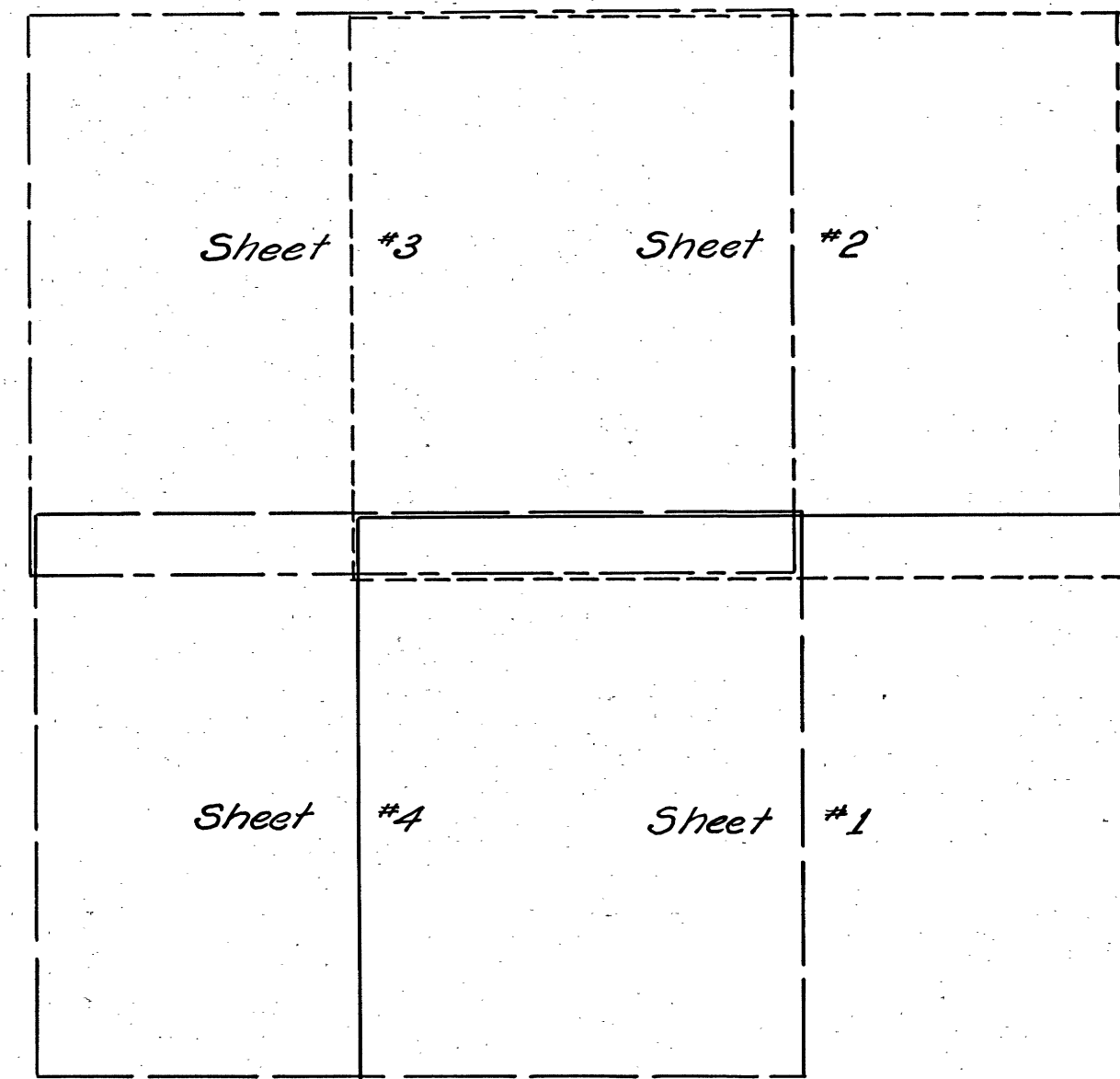
**PLAT OF
 ANGELS CAMP**
 CALAVERAS COUNTY
 DRAWN AND SURVEYED BY
A. B. BEAUVAIS
 COUNTY SURVEYOR OF TUOLUMNE COUNTY, CAL.

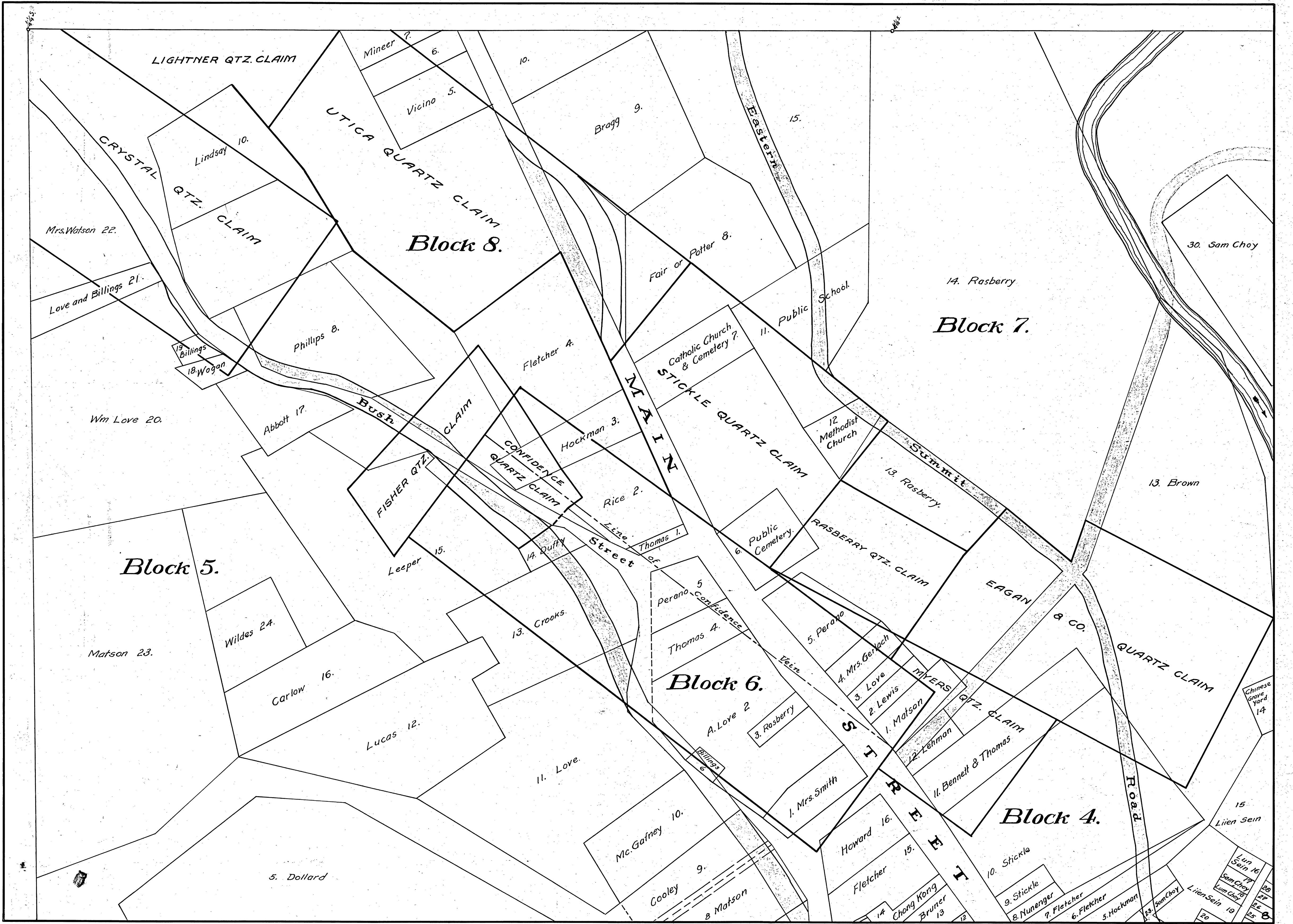
COMPRISING THE SE 1/4 OF NE 1/4 AND NE 1/4 OF
 SE 1/4 OF SECTION 33 - SW 1/4 OF NW 1/4 AND NW 1/4
 OF SW 1/4 OF SECTION 34. TOWNSHIP THREE
 NORTH, RANGE THIRTEEN EAST OF MT. DIABLO
 BASE AND MERIDIAN. 160 ACRES

SURVEY COMMENCED OCT. 9TH, COMPLETED DEC. 17TH, 1871



SHEET ARRANGEMENT





LIGHTNER QTZ. CLAIM

UTICA QUARTZ CLAIM

Block 8.

CRYSTAL QTZ. CLAIM

STICKLE QUARTZ CLAIM

Block 7.

Block 5.

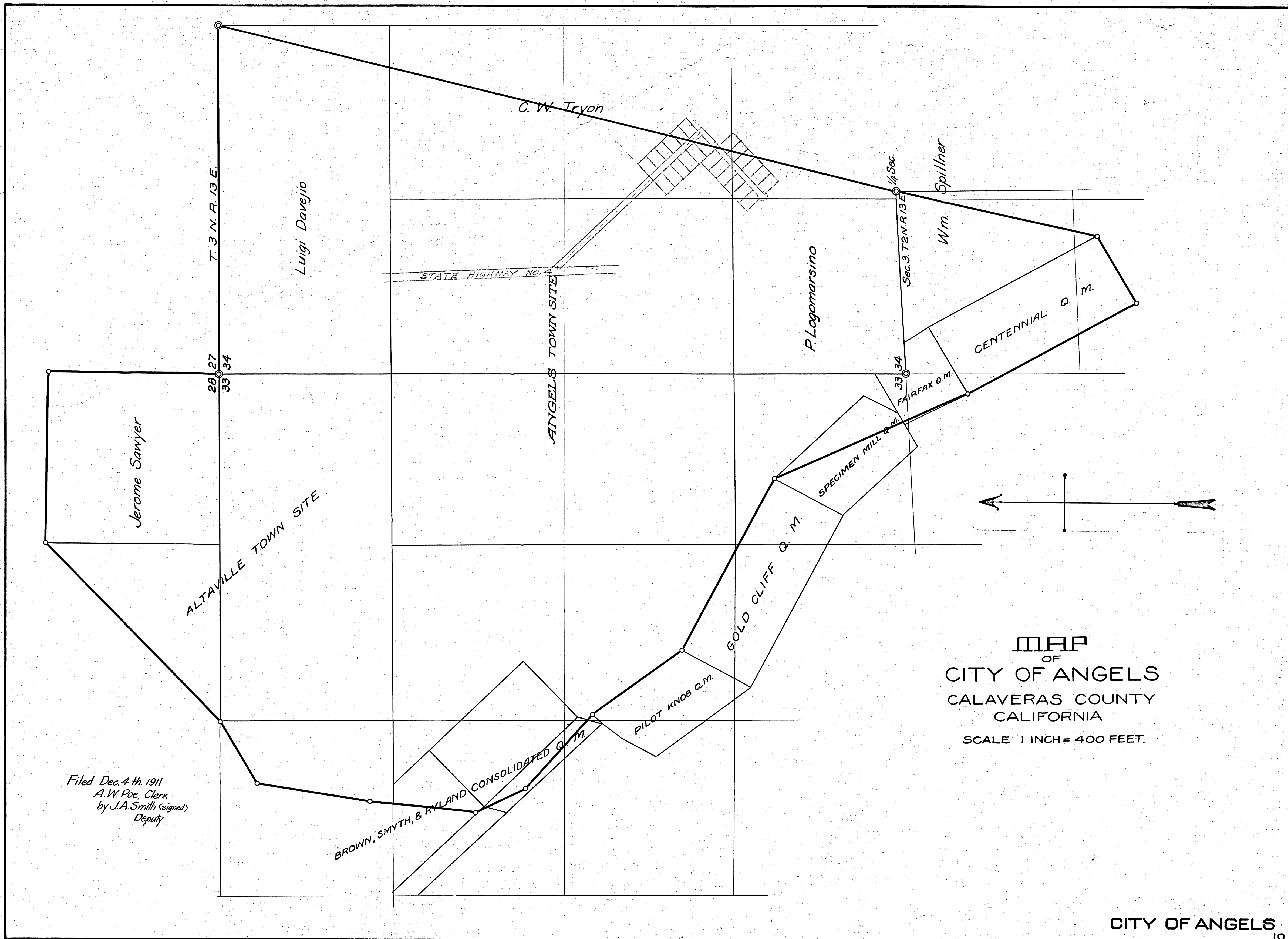
CONFIDENCE QUARTZ CLAIM

Block 6.

Block 4.

QUARTZ CLAIM





Filed Dec. 4th. 1911
 A.W. Poe, Clerk
 by J.A. Smith (signed)
 Deputy

MAP
 OF
 CITY OF ANGELS
 CALAVERAS COUNTY
 CALIFORNIA
 SCALE 1 INCH = 400 FEET.

A98