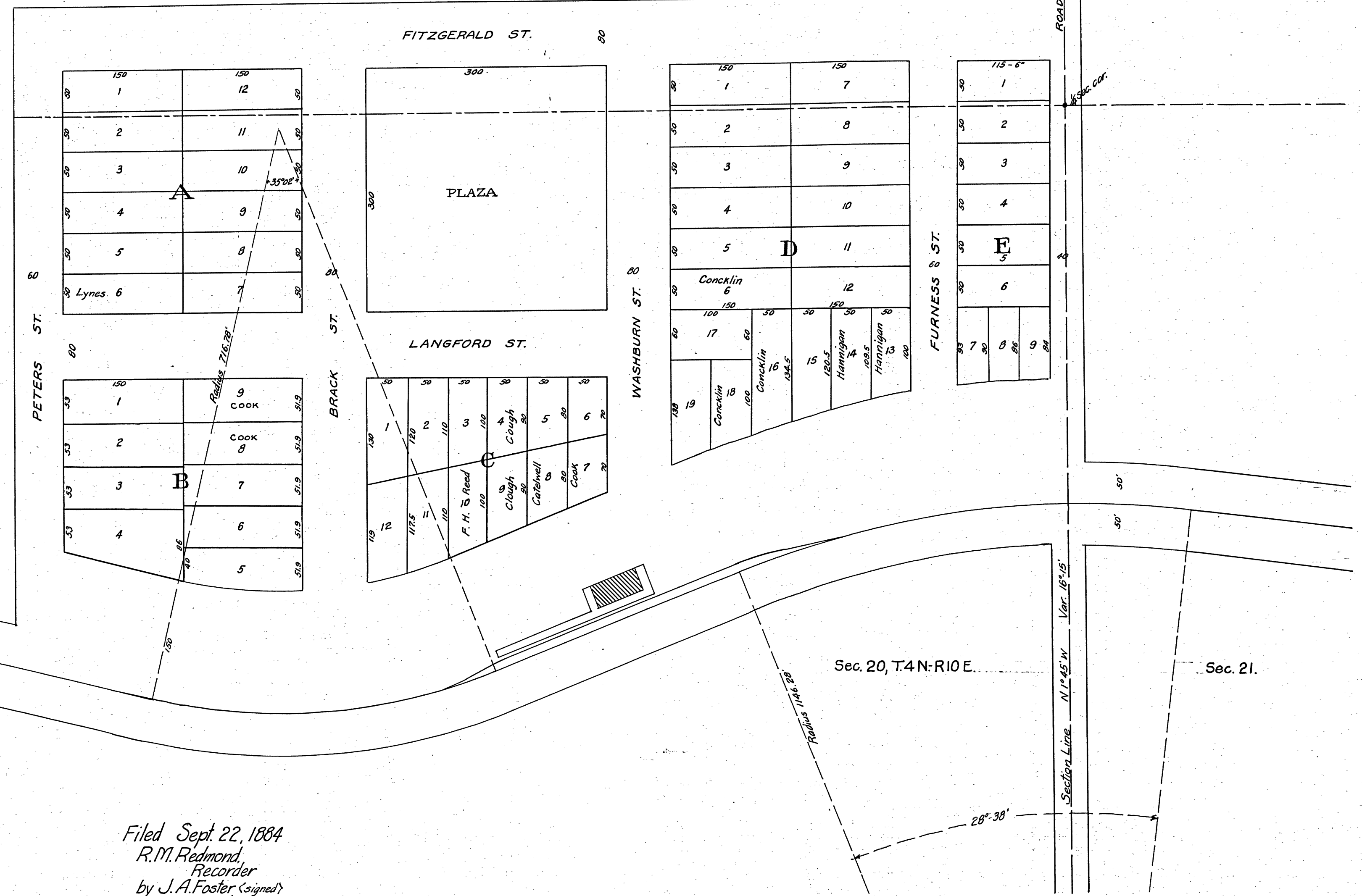


OFFICIAL PLAT
OF THE TOWN OF
BURSON
CALAVERAS COUNTY
CALIFORNIA
AS SURVEYED BY
F.H. REED C.E.
CHIEF ENGINEER S.J. & S.N.R.R.
SEPT. 1884.



Scale 1 inch = 100 feet.

Filed Sept. 22, 1884
R.M. Redmond,
Recorder
by J.A. Foster (signed)
Deputy

TOWNSITE OF
BURSON

11
A. 186