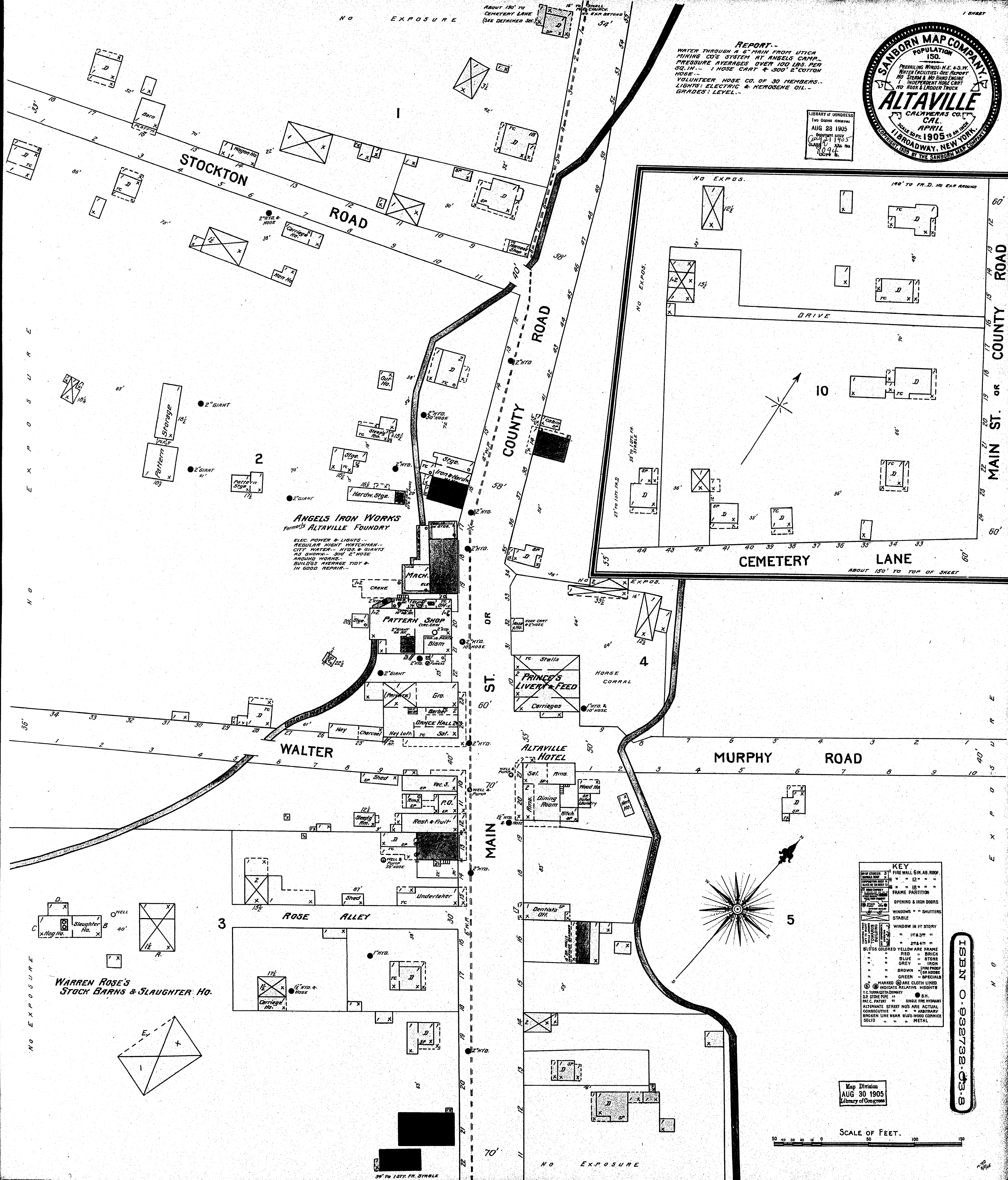




**REPORT -**  
WATER THROUGH A 6" MAIN FROM UTICA MINING CO'S SYSTEM AT ANGELS CAMP.  
PRESSURE AVERAGES OVER 100 LBS. PER SQ. IN. - 1 HOSE CART & 300' 2" COTTON HOSE -  
VOLUNTEER HOSE CO. OF 30 MEMBERS.  
LIGHTS: ELECTRIC & KEROSENE OIL.  
GRADES: LEVEL.

LIBRARY OF CONGRESS  
Two Copies Received  
AUG 28 1905  
Copyright 1905  
CLASS. 8  
CLASS. 8  
CLASS. 8  
CLASS. 8



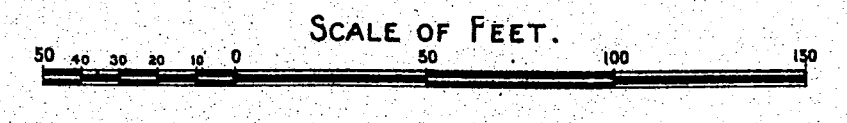
**ANGELS IRON WORKS**  
FORMERLY ALTAVILLE FOUNDRY  
ELEC. POWER & LIGHTS -  
REGULAR NIGHT WATCHMAN -  
CITY WATER - HYD. & GIANTS  
NO SWIM - 300' 2" HOSE  
AROUND WORKS -  
BUILDINGS AVERAGE TIDY &  
IN GOOD REPAIR.

**WARREN ROSE'S**  
STOCK BARN & SLAUGHTER HO.

**KEY**

(Symbol)	3	FIRE WALL GIN. AB. ROOF.
(Symbol)	12"	FRAME PARTITION
(Symbol)	18"	FRAME PARTITION
(Symbol)		OPENING & IRON DOORS
(Symbol)		WINDOWS " SHUTTERS
(Symbol)		STABLE
(Symbol)		WINDOW IN 1ST STORY
(Symbol)	1 1/2"	"
(Symbol)	2 1/2"	"
(Symbol)		BLOCKS COLORED YELLOW ARE FRAME
(Symbol)		RED " BRICK
(Symbol)		BLUE " STONE
(Symbol)		GREY " IRON
(Symbol)		BROWN " FIRE PROOF
(Symbol)		GREEN " OR ADDED
(Symbol)		" SPECIALS
(Symbol)		" MARKED ARE CLOTH LINED
(Symbol)		" INDICATE RELATIVE HEIGHTS
(Symbol)		" T.C. THROUGH DIMNEY
(Symbol)		" S.S. STEEL FIRE
(Symbol)		" S.H. SINGLE FIRE HYDRANT
(Symbol)		" PAT. C. PATENT
(Symbol)		" ALTERNATE STREET NOS ARE ACTUAL
(Symbol)		" CONSECUTIVE " " ARBITRARY
(Symbol)		" BROKEN LINE NEAR BLDG-WOOD CORNICE
(Symbol)		" SOLID " " METAL

Map Division  
AUG 30 1905  
Library of Congress



ISBN 0-932738-03-8